

H-2 GAS SAVER PEDAL

This pedal has ability to control on/off to gas oxygen and air (if desired). Pedal has three inlets and three outputs to torch. Pedal is on when depressed, and off when released. This pedal is mechanical and does not use electricity. Pedal works with all torches with surface mix outer fire.



554040770 \$360.00

EL2 GasSaver Foot Pedal

Solenoid valves are used in conjunction with the EL2 foot pedal to control the flow of gases. The EL2 GasSaver should not be used on premix flames. Pedal will switch on and off the outer flame of most all 4-inlet burners.



e12 \$496.03

Adjustable Oxygen ByPass For Foot Pedal

This component is an attachment that you can put on your foot pedal. Foot pedal oxygen by pass allows outer fire oxygen to flow in small amounts while the foot pedal is in the off position. Also supports better combustion of the inner fire when doing inside out work where flames tend to extinguish. Great to make your inner flame hotter while running your torch with foot pedal. Added oxygen surrounding the inner flame helps to melt color rods better when working with out unnecessary boiling of temperamental colors.



oxy bypass \$60.00

Top Hat Foot Pedal

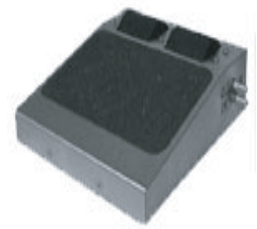
This foot pedal is an on - off pedal made of heavy duty steel. It is a mechanical pedal and does not require electricity.



tophatfootpedal \$325.00

RMB Adjustable Foot Pedal

The RMB Foot Controller allows for complete metering of fuel gases to the burner. By adjusting the two valve rollers, an operator can use their foot or feet to control the flow of gases independently or together from fully open to almost closed. It is important to note that this unit is not designed to be used as the shutoff of the burner. The valve system used is designed to adjust down to a minimal output and not to fully close.



rmbng	RMB ADJUSTABLE FOOT PEDAL (NATURAL)	\$427.86
rmbp	RMB ADJUSTABLE FOOT PEDAL (PROPANE)	\$427.86

ROCK-IT Foot Pedal

This Non-Electrical unit allows technically sound opening and closing of gas valves. Provides freedom of movement with a maintain switch which keeps outer fires on until switch is depressed a second time. No worries of overheating! For the Flameworkeer who runs outer fires for extended periods of time lasting over an hour, this unit can be used for safe & silent operation. Propane and Oxygen hoses not included. The Rock-It is compatible with all 2 stage 4 prong torches. Warranty for one year.



ggt-rock-itfp	ROCK-IT FOOT PEDAL	\$440.00
ggt-rock-itfpob	ROCK-IT FOOT PEDAL W OXYGEN BYPASS	\$480.00

Two Stage ROCK-IT Foot Pedal

This Torch has all the same great features as the Rock-It plus lots more. This is a Two Stage foot pedal that has been designed for use with any Three Stage Torch. It will allow your preset, middle, & outer fire to open and close separately. The Two stage foot pedal can operate any Surface-mix hand torch with one pedal, while the other pedal controls the outer fire of any two stage torch. Another function of this two stage pedal is for the operation of outer fire of two separate torches set up cross-fires.



ggt-rock-itfp2 \$760.00

